



1-078 Compression Latch Pr20.1 L32



Avantages

- Compression 6mm.
- Flat head shape.
- The coloured marking on the casing top indicates the opened/closed position in form of a padlock.
- Inserts with coloured marking.
- Vibration-proof according to DIN EN 61373.
- IP65/67 according to DIN EN 60529.
- Grounding by single-sided grounding nut.
- RH and LH version.
- The H-dimension can be varied via the cranking of the cams.

Materials

- **Housing, insert:** zinc die, chrome plated glossy or black matte, E-coated
- **Axis, nut:** steel, zinc plated
- **Grounding nut:** zinc die, untreated

Notes

(S) Door-thickness max. 22mm
Please configure the quarter-turn with a cam.
Negatively bent cams can not be installed pre-assembled.
1. compression 6mm
2. foamed sealing PUR



Compression Latch with insert, version RH, closing left

	Part Number	Surface	Insert	Grounding type	Installation type	Delivery Unit
a)	248-9802.01-01201	chrome plated	Square 8mm	Grounding nut	screw-on	1 pc.
a)	248-9862.03-01201	black	Square 8mm		screw-on	1 pc.
a)	248-9803.01-01201	chrome plated	Double bit 3mm pin	Grounding nut	screw-on	1 pc.
a)	248-9804.01-01201	chrome plated	Double bit 5mm pin	Grounding nut	screw-on	1 pc.
a)	248-9807.01-01201	chrome plated	Triangular 8mm	Grounding nut	screw-on	1 pc.
a)	248-9808.01-01201	chrome plated	Conical square 9mm	Grounding nut	screw-on	1 pc.
a)	248-9868.03-01201	black	Conical square 9mm		screw-on	1 pc.

Compression Latch with insert, version LH, closing right

	Part Number	Surface	Insert	Grounding type	Installation type	Delivery Unit
b)	248-9802.01-02201	chrome plated	Square 8mm	Grounding nut	screw-on	1 pc.
b)	248-9862.03-02201	black	Square 8mm		screw-on	1 pc.
b)	248-9803.01-02201	chrome plated	Double bit 3mm pin	Grounding nut	screw-on	1 pc.
b)	248-9804.01-02201	chrome plated	Double bit 5mm pin	Grounding nut	screw-on	1 pc.
b)	248-9807.01-02201	chrome plated	Triangular 8mm	Grounding nut	screw-on	1 pc.
b)	248-9808.01-02201	chrome plated	Conical square 9mm	Grounding nut	screw-on	1 pc.
b)	248-9868.03-02201	black	Conical square 9mm		screw-on	1 pc.

Assembly options

200-0020.00-00000 **Assembling cam, LH door**

200-0021.00-00000 **Assembling cam, RH door**

Accessories

c) 1-102.01 **Cams L45 Steel**

6-100 **Wrenches and Keys**

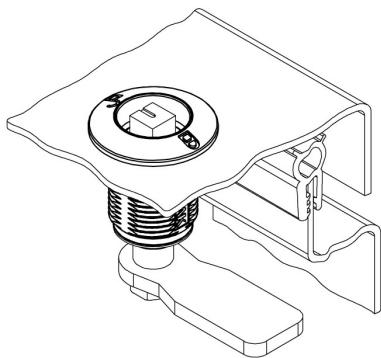
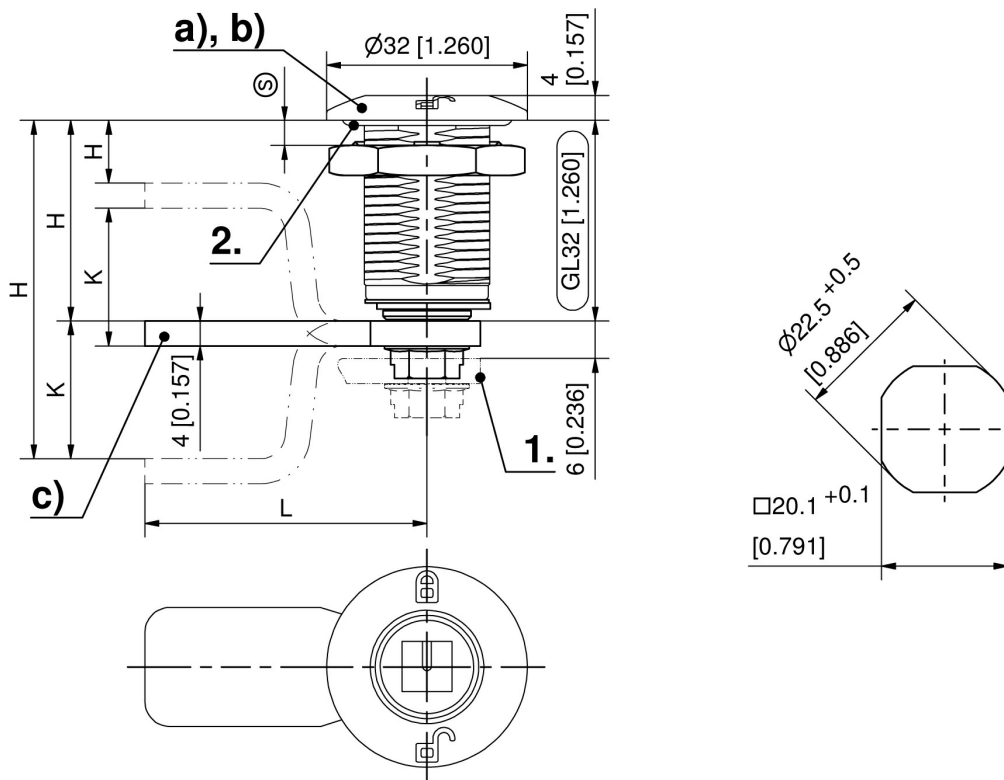
6-101 **Universal key**

6-105 **Keys for the Railway Sector**

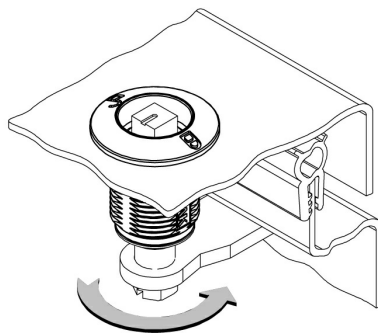
200-4103.00-00000 **Dust cap**

200-4601.00-00000 **Anti-rotation device**

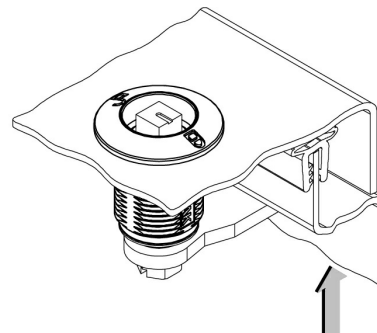
200-4601.02-00000 **Anti-rotation device**



open, unlatched position



First 90° rotation: the cam latches behind the frame into the locked position. The door cannot be opened.



A further 90° rotation will pull the already latched cam towards the frame around 6mm [0.236]: the seal is compressed, the door is latched and free of play.



1-102.01 Cams L45 Steel



Avantages

- Cams without ramp and stop.
- **a** = straight cam (XX)
- **(XX)** = housing length, measured from the upper edge of the panel to the upper edge of the cam.
- **b** = negatively bent cam (upwards).
- **c** = positively bent cam (downwards).

Materials

- **Cams:** steel, zinc plated

Notes

Attention: please note that a collision with the fixing nut of negatively bent cams installed in thick doors might be possible. The functionality has to be checked in the individual case.
Formula for H-dimension:
for negatively bent cams K will be subtracted from (XX),
for positively bent cams K will be added to (XX).



Cam, length 45mm, without stop

Part Number	b) negatively bent K =	c) positively bent K =	Delivery Unit
100-0545.15-00022	22 mm	22 mm	1 pc.
100-0545.15-00020	20 mm	20 mm	1 pc.
100-0545.15-00018	18 mm	18 mm	1 pc.
100-0545.15-00016	16 mm	16 mm	1 pc.
100-0545.15-00014	14 mm	14 mm	1 pc.
100-0545.15-00012	12 mm	12 mm	1 pc.
100-0545.15-00010	10 mm	10 mm	1 pc.
100-0545.15-00008	8 mm	8 mm	1 pc.
100-0545.15-00006	6 mm	6 mm	1 pc.
100-0545.15-00004	4 mm	4 mm	1 pc.
100-0545.15-00002	2 mm	2 mm	1 pc.
a) 100-0545.15-00000	00 mm	00 mm	1 pc.

